

US 60 Bridge Replacement Study Cumberland River in Livingston County, Kentucky

ENVIRONMENTAL JUSTICE REVIEW

Project Number: 1-1142.00

Nov. 5, 2013

Prepared for

Kentucky Transportation Cabinet (KYTC) – Division of Planning



Prepared by

Pennyrile Area Development District



This document was prepared in cooperation with the Kentucky Transportation Cabinet.

TABLE OF CONTENTS

1.0 INTRODUCTION1

2.0 WHAT IS ENVIRONMENTAL JUSTICE?1

3.0 METHODOLOGY4

4.0 CENSUS DATA ANALYSIS5

5.0 STUDY FINDINGS: POPULATION BY PERSONS OF MINORITY ORIGIN7

6.0 STUDY FINDINGS: POPULATION BY PERSONS BELOW POVERTY LEVEL7

7.0 STUDY FINDINGS: POPULATION BY PERSONS AGE 65 YEARS AND OLDER8

8.0 STUDY FINDINGS: POPULATION BY DISABILITIES AGE 5 AND OVER12

9.0 CONCLUSION14

LIST OF TABLES

Table 1: 2000 Census Data by Race in Study Area Appendix B

Table 2: 2000 Census Data by Age, Disability and Poverty in Study Area Appendix B

LIST OF EXHIBITS

Exhibit 1: Study Area for Environmental Justice Study 2

Exhibit 2: Study Area Census Block Groups 6

Exhibit 3: Minority Population Map 9

Exhibit 4: Poverty Population Map 10

Exhibit 5: Population 65 Years and Older 11

Exhibit 6: Population with Disabilities 13

APPENDICES

Appendix A: Study Methodology

Appendix B: US Census Data Tables for Study Area

Appendix C: Analysis Range Explanation and Methodology for Population Percentages Above or Below the State Threshold

1.0 INTRODUCTION

This report presents a review of the socioeconomic characteristics in the study area for the City of Smithland, Kentucky located in Livingston County, which is also located within the Pennyrite Area Development District. This area is depicted in *Exhibit 1, Study Area*. Data from the U.S. Census Bureau's 2000 Census has been utilized for the analysis of the Study Area. The 2000 data was utilized instead the 2010 data for this evaluation because of changes made by the U.S. Census Bureau which resulted in limited 2010 Census information. It is intended to be used as a "first look study" into the socioeconomic characteristics that exist within the Study area. If, at a later time specific projects and project locations are identified, a more in-depth analysis of the socioeconomic characteristics may be warranted. The information and results are intended to assist the Kentucky Transportation Cabinet in making informed and prudent transportation decisions in the study area, especially with regard to the requirements of *Executive Order 12898: Federal Actions to Address Environmental Justice in Minority Populations and Low-Income Populations* (signed February 11, 1994). Executive Order 12898 states:

...each Federal agency shall make achieving environmental justice part of its mission by identifying and addressing, as appropriate, disproportionately high and adverse human health or environmental effects of its programs, policies, and activities on minority populations and low-income populations..."

This report outlines Census 2000 statistics for the project area using tables and maps. Statistics are provided on minority, low-income, elderly, and disabled populations for the block groups and census tracts within the project area, Livingston County, Kentucky and the United States.

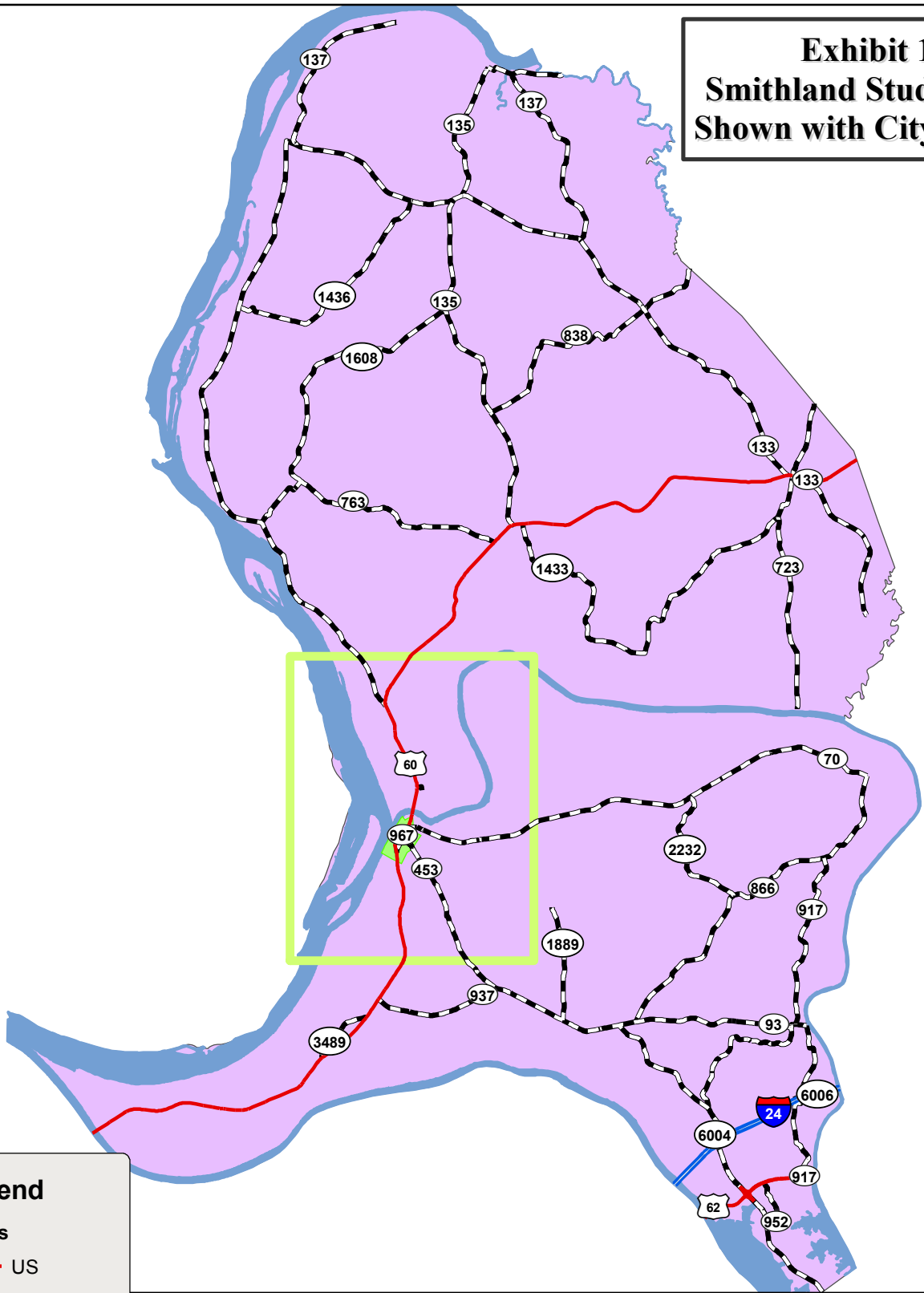
2.0 WHAT IS ENVIRONMENTAL JUSTICE?

The U.S. Department of Transportation (DOT) outlines the three primary Environmental Justice Concepts as:

1. To avoid, minimize, or mitigate disproportionately high and adverse human health or environmental effects, including social and economic effects, on minority populations and low-income populations.
2. To ensure the full and fair participation by all potentially affected communities in the transportation decision-making process.
3. To prevent the denial of, reduction in, or significant delay in the receipt of benefits by minority populations and low-income populations.

Low-income is defined in U.S. DOT Order (5610.2) as "a person whose median household income is at or below the Department of Health and Human Services (HHS) poverty guidelines." A low-income population is "any readily identifiable group of low-income persons who live in geographic proximity, and if circumstances warrant, geographically dispersed/transient persons..."

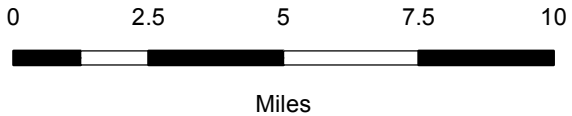
Exhibit 1 Smithland Study Area Shown with City Limits



Legend

Roads

- US
- Interstate
- Parkway
- State
- + Smithland
- Study Area
- ~ Lakes
- County



Prepared by: Michael Prymula
 Pennyrile Area Development District
 Date: May 2013
 File: Smithland - EJ Study-Exhibit1.mxd

The U.S. DOT order defines minority as:

1. Black (a person having origins in any of the black racial groups of Africa);
2. Hispanic (a person of Mexican, Puerto Rican, Cuban, Central or South American, or other Spanish culture or origin, regardless of race);
3. Asian American (a person having origins in any of the original peoples of the Far East, Southeast Asia, the Indian subcontinent, or the Pacific Islands); or
4. American Indian and Alaskan Native (a person having origins in any of the original people of North America and who maintains cultural identification through tribal affiliation or community recognition).
5. Native Hawaiian or Other Pacific Islander - a person having origins in any of the original peoples of Hawaii, Guam, Samoa, or other Pacific Islands.

A minority population is “any readily identifiable groups of minority persons who live in geographic proximity, and if circumstances warrant, geographically dispersed/transient persons...”

A disproportionately high and adverse effect on a minority or low-income population means an adverse effect that:

1. is predominately borne by a minority population and/or low-income population, or
2. will be suffered by the minority population and/or low-income population and is appreciably more severe or greater in magnitude than the adverse effect that will be suffered by the non-minority population and/or non-low-income population.

Elderly and disabled populations (also used in this analysis) are not specifically recognized under the definition of an Environmental Justice community. However, the U.S. DOT specifically encourages the early examination of potential populations of the elderly, children, disabled, and other populations protected by Title VI of the Civil Rights Act of 1964 and related nondiscrimination statutes.

METHODOLOGY

Data for this study was collected by using the method outlined by the KYTC document, “Methodology for Assessing Potential Environmental Justice Concerns for KYTC Planning Studies” that is located in *Appendix A, Methodology*. The U.S. Census Data used in the report is taken from American Fact Finder Summary File 3 including tables:

- P7. Hispanic or Latino By Race
- P8. Sex by Age
- P 41. Age by Types of Disability for the Civilian Non-institutionalized Population 5 Years and Over with Disabilities
- P 87. Poverty Status in 1999 by Age

The data was compiled with maps and tables to present a detailed description of the community conditions in and around the study area.

4.0 CENSUS DATA ANALYSIS

U.S. Census data is arranged according to geographic unit. The U.S. Census Bureau defines geographical units as:

- **Census Tract (CT)** – “A small, relatively permanent statistical subdivision of a county or statistically equivalent entity delineated for data presentation purposes by a local group of census data users or the geographic staff of a regional census center in accordance with Census Bureau guidelines. CTs generally contain between 1,000 and 8,000 people. CT boundaries are delineated with the intention of being stable over many decades, so they generally follow relatively permanent visible features. They may also follow governmental unit boundaries and other invisible features in some instances; the boundary of a state or county is always a census tract boundary.”
- **Block Group (BG)** - “A statistical subdivision of a CT. A BG consists of all tabulation blocks whose numbers begin with the same digit in a CT. BGs generally contain between 300 and 3,000 people, with an optimum size of 1,500 people.”
- **Census Block (CB)** – “An area bounded on all sides by visible and/or invisible features shown on a map prepared by the Census Bureau. A CB is the smallest geographic entity for which the Census Bureau tabulates decennial census data.”

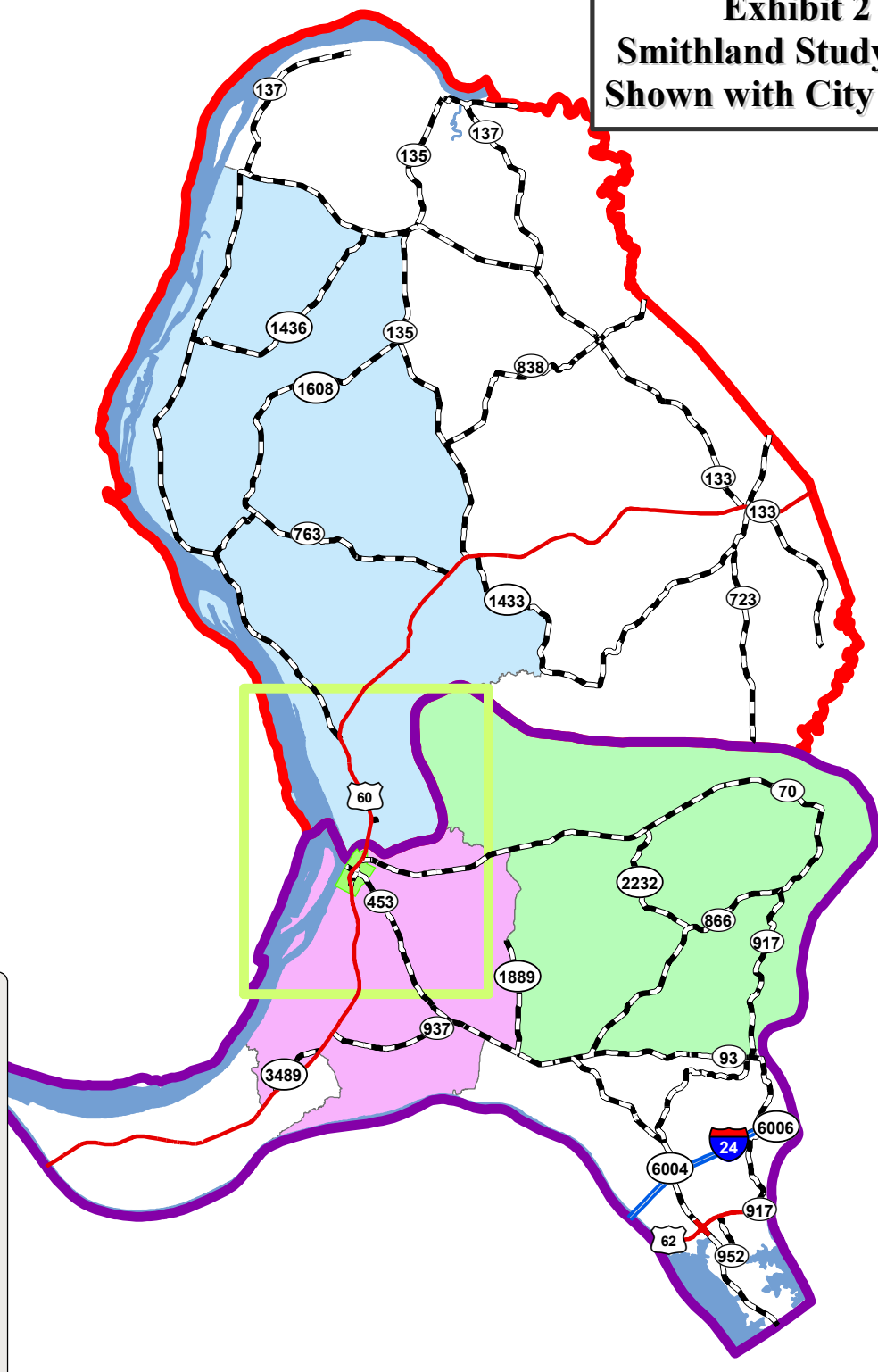
The US Census tables in this report include the total number and percentages for minorities, elderly population, disabled population and low-income population levels for the block groups, census tracts, Livingston County, State of Kentucky and the United States. There are two (2) census tracts and three (3) block groups that are relevant to this study area. The Census Data Tables used in this report are located in *Appendix B, Data Tables*. Total population numbers are included in the census tract data even though all block groups within a census tract may not be included in the study area.

A method developed by the Ohio Department of Transportation (ODOT)¹ to identify target populations is applied in this study. This study will use the population percentages for Livingston County as the reference threshold for identifying target populations. The County numbers most likely provide a better snapshot of the overall population characteristics of the region in the project area as opposed to the national percentages.

In reviewing each block group for target populations, an analysis range was used based on the reference threshold in each of the four census categories utilized in this study. This range was set at 25 percent above the threshold to 25 percent below the threshold. The full explanation on how this reference threshold is applied is explained in *Appendix C, Analysis Ranges*.

The 2000 Census BlockGroups that comprise the study area are shown in Exhibit 2. It should be noted that some BlockGroups fail to fall within the study area; therefore any BlockGroups that touches the boundary of the study area is included.

Exhibit 2 Smithland Study Area Shown with City Limits



Legend

- Smithland
- Study Area
- County

Tracts

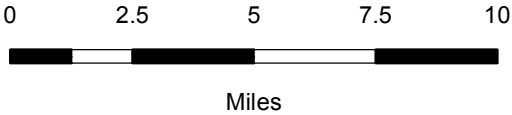
- 401
- 402

Blockgroups

- 211390401004
- 211390402002
- 211390402003

Roads

- US
- Interstate
- Parkway
- State
- Lakes



Prepared by: Michael Prymula
 Pennyrile Area Development District
 Date: May 2013
 File: Smithland - EJ Study-Exhibit2.mxd

5.0 STUDY FINDINGS: POPULATION BY PERSONS OF MINORITY ORIGIN

As described in the Census Data tables in Appendix B, the minority population percentages for the United States is 24.86 percent, which is significantly higher than Kentucky at 9.92 percent. The Livingston County minority population is 1.63 percent, which is significantly lower than both the National and State averages.

As shown in *Exhibit 3, Minority Population*, the three (3) BlockGroups (BGs) in the study area had a lower percentage of minority population in relation to the state threshold (9.92%). The BG with the highest percentage is CT 040200 BG 3 (2.14%). The remaining two (2) BGs are listed in order from highest to lowest as follows: CT 040200 BG 2 (1.42%) and CT 040100 BG 4 (1.24%).

6.0 STUDY FINDINGS: POPULATION BY PERSONS BELOW POVERTY LEVEL

As described in the Census Data tables in Appendix B, the percentage of persons below the poverty level in the United States is 12.05 percent, which is just below Kentucky's 15.37 percent. The Livingston County poverty percentage is 10.14 percent, which is significantly lower than both the National and State percentages.

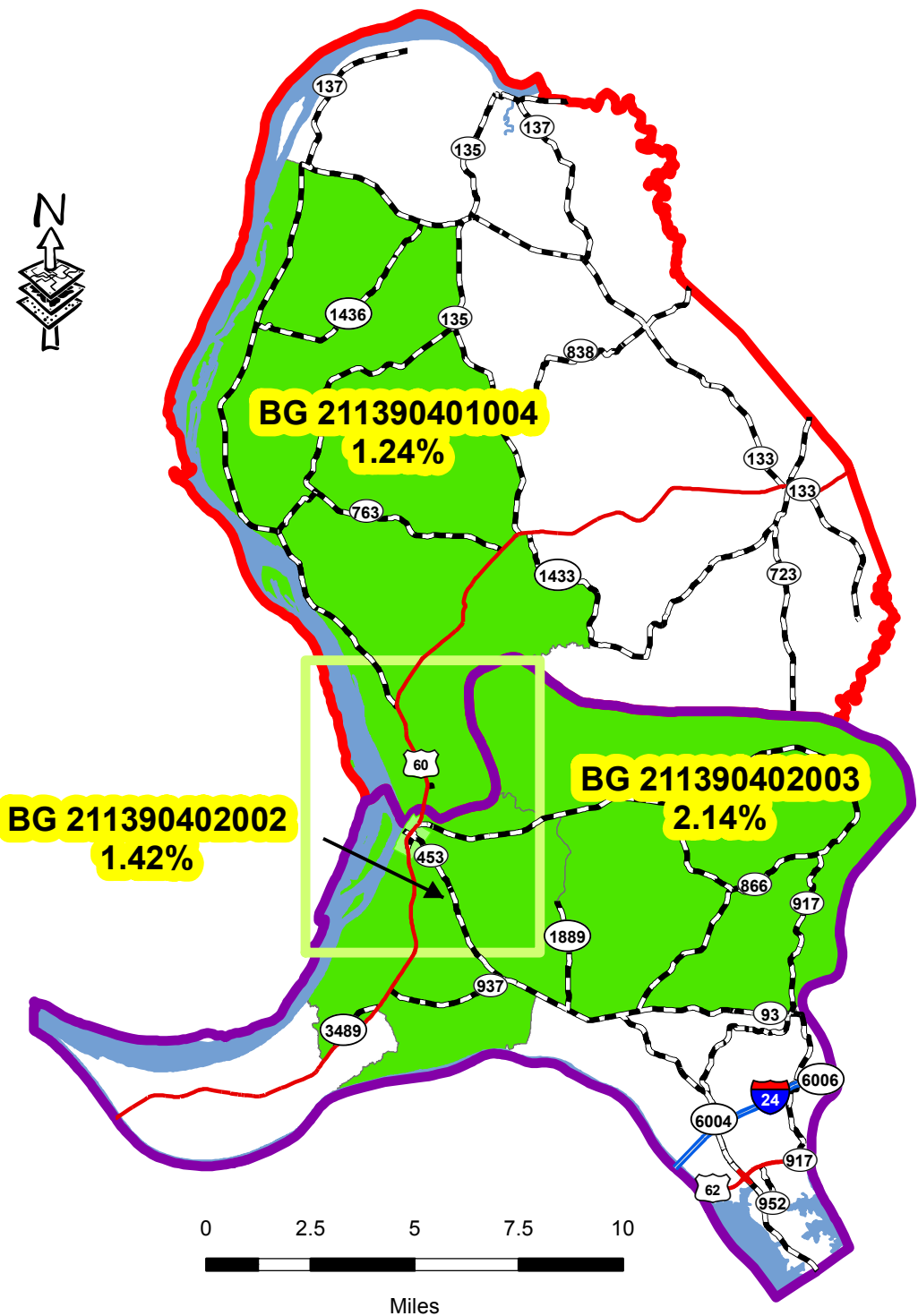
As shown in *Exhibit 4, Persons Below Poverty Level*, the three (3) BlockGroups (BGs) in the study area had a lower percentage of persons below poverty in relation to the state threshold (15.37%). The BG with the highest percentage is CT 040200 BG 2 (10.86%). The remaining two (2) BGs are listed in order from highest to lowest: CT 040200 BG 3 (9.39%) and CT 040100 BG 4 (8.20%).

7.0 STUDY FINDING: POPULATION BY PERSONS AGE 65 YEARS AND OLDER

As described in the Census Data Tables in Appendix B, the *Persons 65 and Over*, Percentages for the United States was 12.43 percent, which was about equal to the State of Kentucky with 12.49 percent. The Livingston County percentage is 14.92 percent, which is significantly higher than both the National and State percentages.

As shown in *Exhibit 5, Population 65 and Older*, the three (3) BlockGroups (BGs) in the study area had a higher percentage of persons age 65 and older in relation to the state threshold (12.49%). The BG with the highest percentage is CT 040100 BG 4 (17.39%). The remaining two (2) BGs are listed in order from highest to lowest: CT 040200 BG 2 (17.15%) and CT 040200 BG 3 (10.53%).

Exhibit 3 Smithland Census Block Groups of Minority Population



Minority %	
Tract 040100	1.29%
Block Group 4	1.24%
Tract 040200	1.80%
Block Group 2	1.42%
Block Group 3	2.14%

Legend

- + Smithland
- Study Area
- County

Minority Population

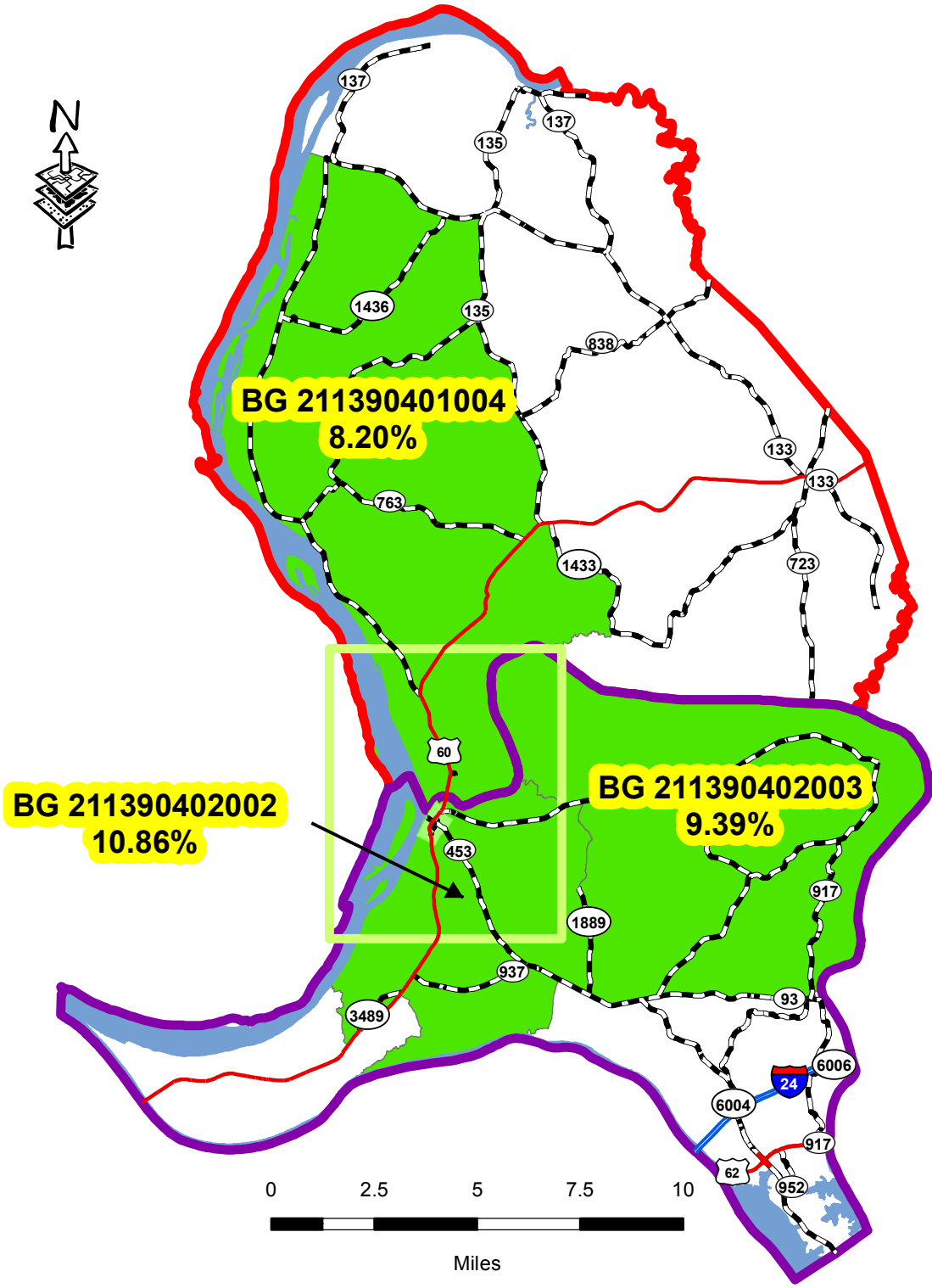
- Significantly Above State Threshold
- Just Above State Threshold
- Just Below State Threshold
- Significantly Below State Threshold

Roads

- US
- Interstate
- Parkway
- State

Exhibit 4 Smithland Census Block Groups of Population Below Poverty Line

Persons Below Poverty Level (%)	
Tract 040100	12.52%
Block Group 4	8.20%
Tract 040200	8.99%
Block Group 2	10.86%
Block Group 3	9.39%



Legend

- + Smithland
- Study Area
- County

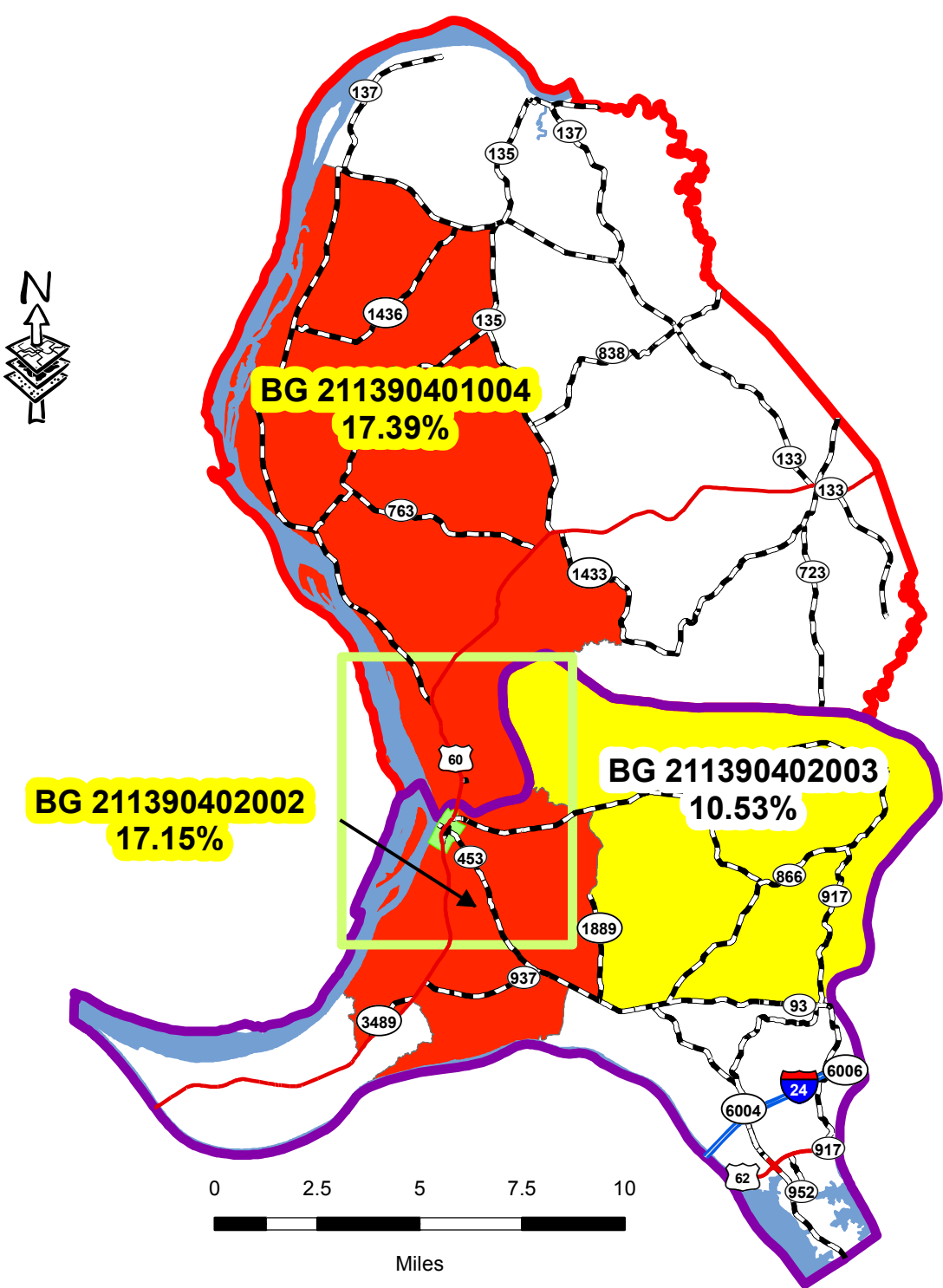
Population Below Poverty Line

- + Significantly Above State Threshold
- + Just Above State Threshold
- + Just Below State Threshold
- + Significantly Below State Threshold

Roads

- US
- Interstate
- Parkway
- State

Exhibit 5 Smithland Census Block Groups of Population 65 Years and Older



Persons 65 and Over (%)	
Tract 040100	19.51%
Block Group 4	17.39%
Tract 040200	12.72%
Block Group 2	17.15%
Block Group 3	10.53%

Legend

- + Smithland
- Study Area
- County

Population 65 Years and Older

- + Significantly Above State Threshold
- + Just Above State Threshold
- + Just Below State Threshold
- + Significantly Below State Threshold

Roads

- US
- Interstate
- Parkway
- State

Prepared by: Michael Prymula
 Pennyrile Area Development District
 Date: May 2013
 File: Smithland - EJ Study-Exhibit5.mxd

8.0 STUDY FINDING: POPULATION BY DISABILITIES AGE 5 AND OVER

As described in the Census Data tables in Appendix B, the *Population By Disabilities Age 5 and Over* for the United States was 28.23 percent, which was higher than the State of Kentucky with 21.63 percent. The Livingston County percentage is 20.08 percent, which is significantly higher than both the National and State percentages.

As shown in *Exhibit 6, Population by Disabilities Age 5 and Over*, the three (3) BGs in the study area, all had a higher percentage of persons with disabilities age 5 and older in relation to the state threshold (21.63%). The BG with the highest percentage is CT 040200 BG 2 (56.70%). The remaining two (2) BGs are listed in order from highest to lowest: CT 040100 BG 4 (42.86%) and CT 040200 BG 3 (28.40%).

Exhibit 6 Smithland Census Block Groups of Persons with Disabilities

Population by Disabilities Age 5 and Over (%)	
Tract 040100	20.42%
Block Group 4	42.86%
Tract 040200	19.92%
Block Group 2	56.70%
Block Group 3	28.40%

Legend

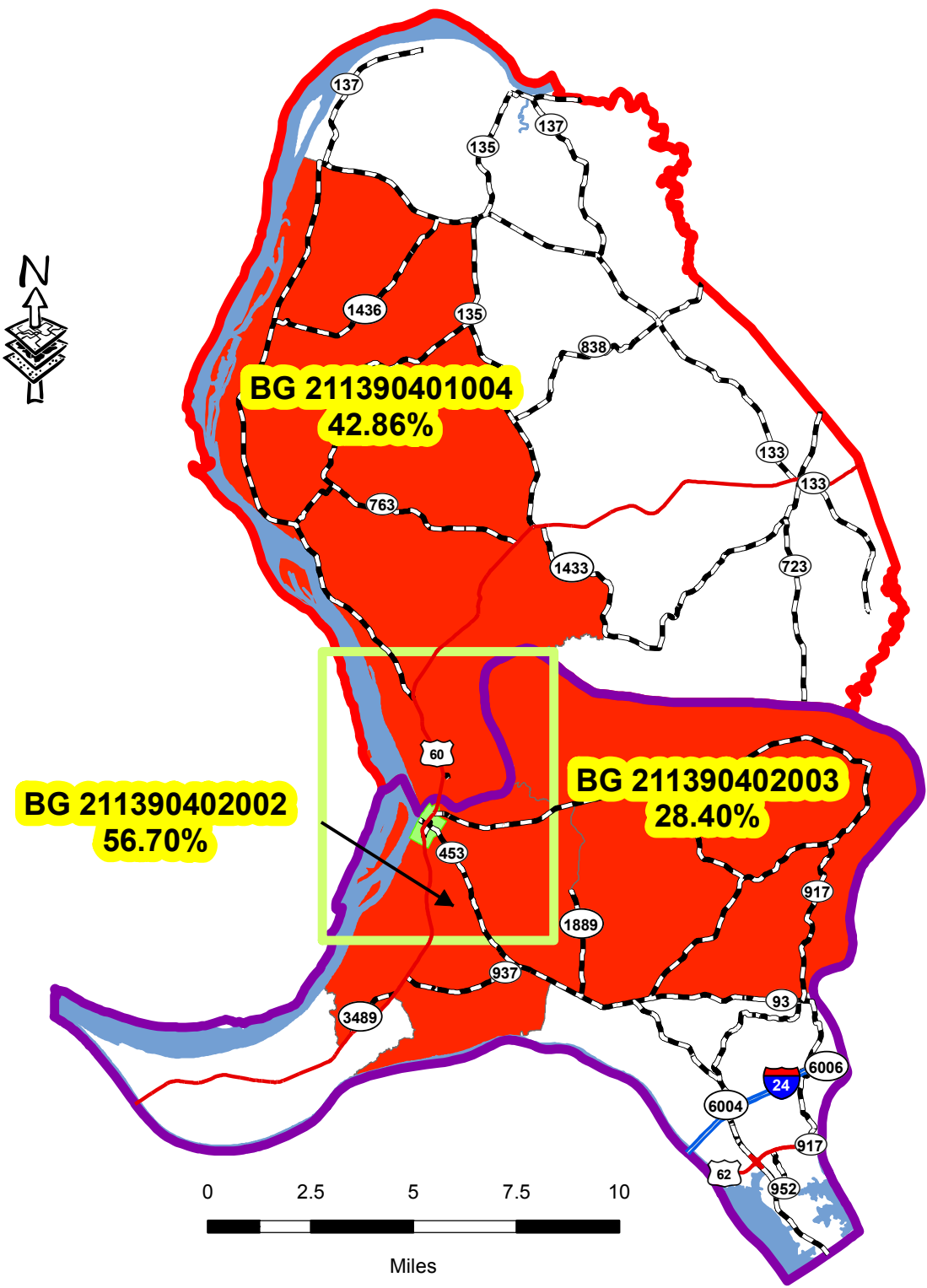
- Smithland
- Study Area
- County

Persons with Disabilities

- Significantly Above State Threshold
- Just Above State Threshold
- Just Below State Threshold
- Significantly Below State Threshold

Roads

- US
- Interstate
- Parkway
- State



9.0 CONCLUSION

After the analysis of the study area, it became apparent that there are several BlockGroups that may require further evaluation depending on the scope of the projects planned within the study area. All BGs with higher percentages of the target populations compared to the State thresholds were described in the *Study Findings* section and will not be re-addressed in this Conclusion Section. It should be noted that two (2) of the three (3) total BlockGroups within the study area were significantly above the state threshold in at least two of the four areas of interest, with all three (3) BlockGroups being significantly above the state threshold for persons disabled.

Appendix A

**Methodology for Assessing
Potential Environmental Justice Concerns
for KYTC Planning Studies**

Updated: February 1, 2002

The demographics of the affected area should be defined using U.S. Census data (Census tracts and block groups) and the percentages for minorities, low-income, elderly, or disabled populations should be compared to those for the following:

- Other nearby Census tracts and block groups,
- The county as a whole,
- The entire state, and
- The United States.

Information from PVA offices, social service agencies, local health organizations, local public agencies, and community action agencies can be used to supplement the Census data.

Specifically, we are interested in obtaining the following information:

- Identification of community leaders or other contacts who may be able to represent these population groups and through which coordination efforts can be made.
- Comparison of the Census tracts and block groups encompassing the project area to other nearby Census tracts and block groups, county, state, and United States percentages.
- Locations of specific or identified minority, low-income, elderly, or disabled population groups within or near the project area. This may require some field reviews and/or discussions with knowledgeable persons to identify locations of public housing, minority communities, ethnic communities, etc., to verify Census data or identify changes that may have occurred since the last Census. Examples would be changes due to new residential developments in the area or increases in Asian and/or Hispanic populations.
- Concentrations or communities that share a common religious, cultural, ethnic, or other background, e.g., Amish communities.
- Communities or neighborhoods that exhibit a high degree of community cohesion or interaction and the ability to mobilize community actions at the start of community involvement.
- Concentrations of common employment, religious centers, and/or educational institutions with members within walking distance of facilities.
- Potential effects, both positive and negative, of the project on the affected groups as compared to the non-target groups. This may include, but are not limited to:
 1. Access to services, employment or transportation.
 2. Displacement of persons, businesses, farms, or non-profit organizations.
 3. Disruption of community cohesion or vitality.
 4. Effects to human health and/or safety.
- Possible methods to minimize or avoid impacts on the target population groups.

If percentages of these populations are elevated within the project area, it should be brought to the attention of the Division of Planning immediately so that coordination with affected populations may be conducted to determine the affected population's concerns and comments on the project. Also, with this effort, representatives of minority, elderly, low-income, or disabled populations should be identified so that, together, we can build a partnership for the region that may be incorporated into other projects. Also, we hope to build a Commonwealth-wide database of contacts. We are available to participate in any meetings with these affected populations or with their community leaders or representatives.

In identifying communities, agencies may consider as a community either a group of individuals living in geographic proximity to one another, or a geographically dispersed/transient set of individuals (such as migrant workers or Native Americans), where either type of group experiences common conditions of environmental exposure or effect. The selection of the appropriate unit of analysis may be a governing body's jurisdiction, a neighborhood, census tract, or other similar unit that is to be chosen so as not to artificially dilute or inflate the affected population. A target population also exists if there is (1) more than one minority or other group present and (2) the percentages, as calculated by aggregating all minority persons, exceed that of the general population or other appropriate unit of geographic analysis.

Maps should be included that show the Census tracts and block groups included in the analysis as well as the relation of the project area to those Census tracts and block groups.

Appendix B

Table 1
2000 Census Data by Race

	Total	White Alone	White Alone (%)	Black or African American Alone	Black or African American Alone (%)	Hispanic or Lation Origin	Hispanic or Lation Origin (%)	American Indian an Alaska Native Alone	American Indian an Alaska Native Alone (%)	Asian Alone	Asian Alone (%)	Native Hawaiian and other Pacific Islander Alone	Native Hawaiian and other Pacific Islander Alone (%)
United States	281,421,906	15,359,073	5.46%	6,826,228	2.43%	69,961,280	24.86%	34,991,753	12.43%	81,142,962	28.83%	33,899,812	12.05%
Kentucky	4,041,770	31,805	0.79%	42,443	1.05%	400,881	9.92%	504,793	12.49%	874,156	21.63%	621,096	15.37%
Livingston Co.	9,804	9,656	98.49%	14	0.14%	74	0.75%	41	0.42%	3	0.03%	1	0.01%
Tract 040100	3,178	3,132	98.55%	7	0.22%	17	0.53%	8	0.25%	1	0.03%	0	0.00%
Block Group 4	805	791	98.26%	3	0.37%	1	0.12%	5	0.62%	1	0.12%	0	0.00%
Tract 040200	6,626	6,524	98.46%	7	0.11%	57	0.86%	33	0.50%	2	0.03%	1	0.02%
Block Group 2	1,335	1,316	98.58%	1	0.07%	13	0.97%	5	0.37%	0	0.00%	0	0.00%
Block Group 3	1,310	1,282	97.86%	0	0.00%	11	0.84%	8	0.61%	0	0.00%	0	0.00%

Table 2
2000 Census Data by Age, Disability and Poverty

	Total	Some other race alone	Some other race alone (%)	Two or more races	Two or more races (%)	Total Minority	Minority %	Persons 65 and Over	Persons 65 and Over (%)	Population by Disabilities Age 5 and Over	Population by Disabilities Age 5 and Over (%)	Persons Below Poverty Level	Persons Below Poverty Level (%)
United States	281,421,906	15,359,073	5.46%	6,826,228	2.43%	69,961,280	24.86%	34,991,753	12.43%	81,142,962	28.83%	33,899,812	12.05%
Kentucky	4,041,770	31,805	0.79%	42,443	1.05%	400,881	9.92%	504,793	12.49%	874,156	21.63%	621,096	15.37%
Livingston Co.	9,804	27	0.28%	62	0.63%	160	1.63%	1,463	14.92%	1,969	20.08%	994	10.14%
Tract 040100	3,178	8	0.25%	22	0.69%	41	1.29%	620	19.51%	649	20.42%	398	12.52%
Block Group 4	805	0	0.00%	5	0.62%	10	1.24%	140	17.39%	345	42.86%	66	8.20%
Tract 040200	6,626	19	0.29%	40	0.60%	119	1.80%	843	12.72%	1320	19.92%	596	8.99%
Block Group 2	1,335	9	0.67%	4	0.30%	19	1.42%	229	17.15%	757	56.70%	145	10.86%
Block Group 3	1,310	0	0.00%	17	1.30%	28	2.14%	138	10.53%	372	28.40%	123	9.39%

Appendix C

**Analysis Ranges
Explanation and Methodology**

The Kentucky State percentages are used as a reference threshold in each of the census data categories utilized for this report. Areas that are up to 25% higher than the reference threshold are considered just above the threshold, and areas that are 25% or higher are considered significantly above the threshold.

PERCENT MINORITY

<u>Analysis Range</u>	<u>Percent Minority</u>
Significantly Above Threshold	> 12.5%
Just Above Threshold	9.92% - 12.4%
REFERENCE THRESHOLD (Kentucky State)	9.92%
Just Below Threshold	7.44% - 9.91%
Significantly Below Threshold	< 7.43%

PERCENT 65 AND OLDER

<u>Analysis Range</u>	<u>Percent 65 and Older</u>
Significantly Above Threshold	> 15.62%
Just Above Threshold	12.50% - 15.61%
REFERENCE THRESHOLD (Kentucky State)	12.49%
Just Below Threshold	9.37% - 12.48%
Significantly Below Threshold	< 9.36%

PERCENT DISABLED

<u>Analysis Range</u>	<u>Percent Disabled</u>
Significantly Above Threshold	> 27.05%
Just Above Threshold	21.63% - 27.04%
REFERENCE THRESHOLD (Kentucky State)	21.63%
Just Below Threshold	16.22% - 21.62%
Significantly Below Threshold	< 16.21%

PERCENT BELOW POVERTY

<u>Analysis Range</u>	<u>Percent Below Poverty</u>
Significantly Above Threshold	> 19.22%
Just Above Threshold	15.38% - 19.21%
REFERENCE THRESHOLD (Kentucky State)	15.37%
Just Below Threshold	11.53% - 15.36%
Significantly Below Threshold	< 11.52%